



3rd Junior Workshop on

# THE ECONOMICS OF MIGRATION



Room 210

CERDI, Pôle Tertiaire, 26 Avenue Léon Blum,  
Clermont-Ferrand, France

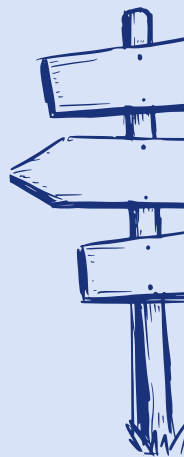


**JUNE  
23-24  
2025**

The **Junior Workshop on the Economics of Migration** is a joint initiative of CERDI, PSE, LISER, the University of Luxembourg, Universidad Carlos III de Madrid, CEPIL, and the IC Migrations.

It offers **Ph.D. students and early-stage researchers** (post-docs and assistant professors with less than 3 years of experience) an **opportunity to share their work in a constructive environment**, as well as to exchange the results of recent research in different fields of migration economics.

This workshop follows the spirit of **the online webinar series on the economics of migration**, an initiative that was launched in April 2020 to **provide a platform for economists working on migration to present their work virtually**. The first two editions of the workshop took place in June 2023 at the IC Migrations, Paris (France), and in June 2024 at LISER, Belval (Luxembourg).



## About the CERDI

The CERDI is a joint research center of the Université Clermont Auvergne, the CNRS (National Center of Scientific Research) and the IRD (Institute for Research on Development) located in Clermont-Ferrand (France). Established in 1976, it is devoted to research on development economics. The economics of human migration represents an important component of its research activities.

# Keynote speakers



## Jesús Fernández-Huertas Moraga

Universidad Carlos III de Madrid

Jesús Fernández-Huertas Moraga is Associate Professor of Economics at UC3M, and a Research Affiliate at IAE (CSIC), Research Fellow at IZA and External Research Fellow at CReAM. He obtained his PhD in Economics from Columbia University.



## Clément Imbert

Sciences Po

Clément Imbert is Professor of Economics at Sciences Po (Paris), and he is also Research Affiliate at BREAD, CEPR, EUDN and JPAL. He obtained his PhD in Economics from PSE.



## Anna Maria Mayda

Georgetown University

Anna Maria Mayda is Professor of Economics at Georgetown University. She is also a Research Fellow of CEPR, CReAM and IZA, and she obtained her PhD in Economics from Harvard University.

# Monday, June 23

11:45 AM

## Check-in

Room 210

12:00 PM



## Welcome Lunch

Terrace on the 4th floor

OR Espace Kim Lavaud, 2nd floor

1:20 PM

## Introduction to the workshop

Simone Bertoli, Joël Machado  
and Jérôme Valette

1:30 PM

## Keynote lecture

### The Second Spanish Immigration Boom

Jesús Fernández-Huertas Moraga  
(Universidad Carlos III de Madrid)

2:30 PM



### Conflict and Skill-Specific Migration - Evidence from the War on Drugs in Mexico

Stefan Leopold (University of Kiel)

*Discussant:* Narcisse Cha'ngom

3:10 PM



### Gendered Impacts of Migration on Household Dynamics and Labor Supply Responses in India

Jimena Romero Pinto (Stockholm  
School of Economics)

*Discussant:* Laura Muñoz-Blanco



3:50 PM



## Coffee break

Espace Kim Lavaud, 2nd floor

4:10 PM



### **Distant Neighbors: Exposure to Immigrants and Far-Right Support in France**

Bertille Evreux (PSE)

*Discussant:* Stanislav Avdeev

4:50 PM



### **From Tweets to Ballots: Refugee Inflows and Natives' Reactions**

Paul Bose (Università degli Studi di Roma Tor Vergata)

*Discussant:* Artur Obminski

5:30 PM



### **Refugee Exposure and Political Polarisation: Poland during the Russia-Ukraine War**

Ines Homburg  
(University of Antwerp)

*Discussant:* Felix Stips

7:30 PM



## Dinner

Restaurant Le Devant,  
32 Rue de Gras, Clermont-Ferrand

# Tuesday, June 24



9:00 AM

## Keynote lecture

### **The Effects of Immigration in Developing Countries**

Clément Imbert (Sciences Po)

10:00 AM



### **Arriving LATE: Access to Citizenship and Economic Integration**

Julio Garbers (LISER)

*Discussant:* Stefan Leopold

10:40 AM



### **Pathways to Integration: The Effect of Apprenticeships in Understaffed Professions on Refugee Employment**

Valentin Wett

(University of Innsbruck)

*Discussant:* Paul Bose

11:20 AM



## **Coffee break**

Espace Kim Lavaud, 2nd floor

11:40 AM



### **Quaking Childhoods, Early Wives: The Impacts of Forced Displacement on Marriage**

Laura Muñoz-Blanco

(University of Exeter Business School)

*Discussant:* Bertille Evreux

12:20 PM



### **Internal Migration and the Spatial Equilibrium: Evidence from Senegal**

Narcisse Cha'ngom (LISER)

*Discussant:* Ines Homburg

1:00 PM



## Lunch

Terrace on the 4th floor  
OR Espace Kim Lavaud, 2nd floor

2:00 PM

### Keynote lecture

## ***The political impact of immigrants and refugees***

Anna Maria Mayda (Georgetown University)

3:00 PM



## **Immigration and Unemployment: Evidence from Germany after the EU Eastern Enlargement**

Felix Stips (IAB)

*Discussant:* Valentin Wett

3:40 PM



## Coffee break

Espace Kim Lavaud, 2nd floor

4:00 PM



## **See the Migrants, Cross the Street? Endogenous Selection Out of Exposure to Migrants**

Artur Obminski (PSE)

*Discussant:* Jimena Romero Pinto

4:40 PM



## **University as a Melting Pot: Long-term Effects of Internationalization**

Stanislav Avdeev  
(University of Amsterdam)

*Discussant:* Julio Garbers

5:30 PM

## End of workshop

# Scientific Organizers



**Simone Bertoli**

CERDI, Université Clermont Auvergne

Simone Bertoli is a Professor of Economics at Université Clermont Auvergne; he is currently head of department at the CERDI, a full member of EUDN and a research fellow at IZA and at the IC Migrations. In 2020, he initiated the online seminars on the Economics of Migration.



**Joël Machado**

LISER

Joël Machado is a Research Scientist at the Luxembourg Institute of Socio-Economic Research (LISER) and a Research Fellow of IZA, DEM (University of Luxembourg) and IRES (Université Catholique de Louvain).



**Jérôme Valette**

CEPII, Université Paris 1 Panthéon Sorbonne

Jérôme Valette is Economist at CEPII and Associate Professor at the University Paris 1 Panthéon Sorbonne. He is also Head of the Dynamics department at IC Migrations and Research Fellow at the PSE International Migration Economics Chair and IZA.



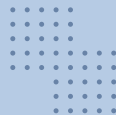
# Sponsors

The organizers gratefully acknowledge the financial support provided by the CERDI.



# Partners





# Scientific committee

Michel Beine (University of Luxembourg), Simone Bertoli (CERDI), Gabriel Chaves Bosch (Queen Mary University of London), Melchior Clerc (CERDI), Luka Delgado-Prieto (University of Oslo), Frédéric Docquier (LISER), Anthony Edo (CEPII), Bertille Evreux (PSE), Martín Fernández (LISER), Jesús Fernández-Huertas Moraga (UC3M), Christina Gathmann (LISER), Elsa Gautrain (University of Fribourg), Jules Gazeaud (CERDI), María Gertrudis Fernández (UC3M), Yajna Govind (CBS), Mitali Roy Mathur (UC Davis), Joël Machado (LISER), Léa Marchal (University Paris 1), Simone Moriconi (IESEG), Hillel Rapoport (PSE), Orlando Díaz Rivera (UC3M), Sarah Schneider-Strawczynski (University of Exeter), Sara Signorelli (CREST), Felix Stips (IAB), Riccardo Turati (UAB), and Jérôme Valette (CEPII).

## Economics of Migration

